

# SHELL SHOCK

**SHELL SHOCK**  
**TECHNICAL SPECIFICATION**

# SHELL SHOCK

## TOUR MANIFEST (1 OF 2)

**SHELL  
SHOCK**

<b>LIGHTING</b>	1	Strand lighting stand
	2	Hercules lighting stands
	2	Hercules T-bars + 6 Suspension bolts/washers/wingnuts
	6	ETC Source 4 Junior Zoom Profiles (no clamps, bolts etc.)
	4	Selecon Acclaim Fresnels (with bench stands + barn doors)
	2	Strand Minim Fresnels (with bench stands + barn doors)
	1	PAR 64 CP62 (with spigot and colour frame)
<b>LIGHTING CONTROL</b>	2	6 way dimmer pack (with spare fuses)
	2	control cables
	1	control desk
	2	13a to 16a converter cables
<b>LIGHTING SUNDRIES</b>	4	15a Grelcos
	3	20m 15a - 15a cables
	6	10m 15a - 15a cables
	5	10m 13a cables
	1	13a working lamp
	2	T18 500W lamps
	2	T27 650W lamps
	2	650W lamps
	1	CP62 1kW lamp
	1 roll	Lee 152 colour filter
	1 roll	Lee 106 colour filter
	1 roll	Lee 075 colour filter
	1 roll	Lee 158 colour filter
	2 rolls	50mm black gaffa tape
	2 rolls	15mm insulating tape
<b>AUDIO/VISUAL</b>	1	LCD projector
	1	IEC power lead 13a
	1	VGA (10m+) lead
	1	laptop (inc. charging lead)
	1	2.5mm stereo jack to twin RCA phonos
	2	RCA phono to 1/4" jack (mono) converters
	2	20m XLR speaker cables
	2	Active monitor speakers (with IEC power cables)
	1	Studiomaster Pro 2 sound mixer (with PSU)
	2	Show A/V CD

# SHELL SHOCK

## TOUR MANIFEST (2 OF 2)

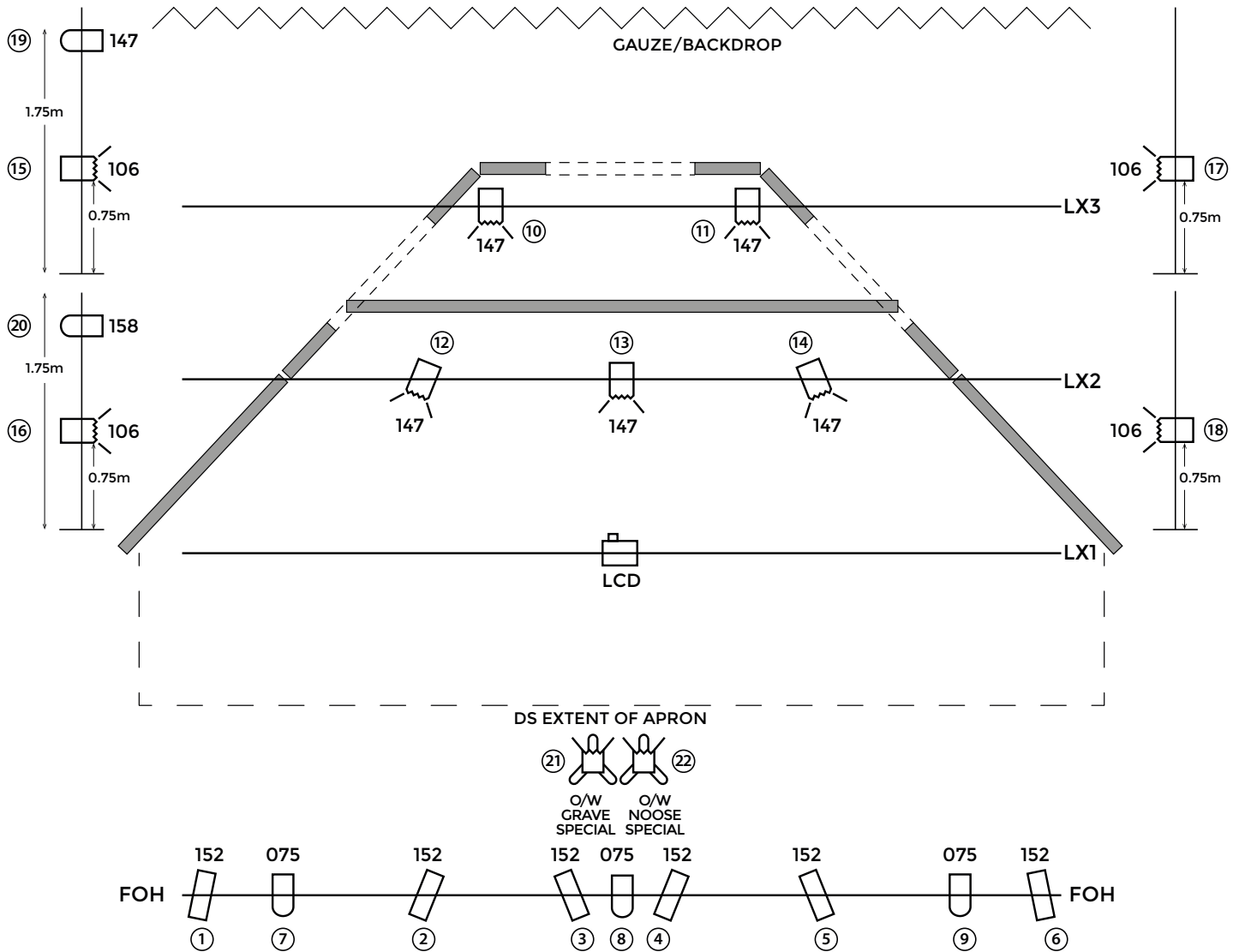


<b>SET</b>	3	doorway sections	
	1	4m beam	
	2	doorway extension limbs	
	4	medium stage braces	
	8	stage weights	
	20	screw eyes	
	1	gauze backdrop	
	1	dust-sheet backdrop	
	1	vinyl stage flooring	
	8	stage pins for hinges	
	1	crash bucket + broken bits	
	<b>TOOLS</b>	1	drill + charger + drill set
		1	screwdriver set
1		craft knife	
2		adjustable spanners	

# SHELL SHOCK

## ELECTRICS – FULL RIG

### PLAN VIEW (NOT TO SCALE)



## NOTES

1. LCD projector can be situated in auditorium depending on throw/lens angle/availability of cradle.
2. All frenels require barn doors.
3. All profiles require soft-focus capability - if not, Lee 256 needed as diffusers.
4. Smaller venues - lanterns 2, 5, 8, 10 and 11 may be cut.
5. All lanterns should be pre-rigged - please contact the company technician if this is an issue.
6. All colour filter is toured - if supplied by the venue it will speed up focusing and the get-out.
7. 8 programmable sub-masters are required for show operation - please advise if this is an issue.
8. LX console and sound desk should be adjacent for ease of operation - please advise if this is an issue.
9. Ideally, the stage should be simple 'black box' - no masking/tabs are required.

# SHELL SHOCK

## FIXTURE SCHEDULE – FULL RIG

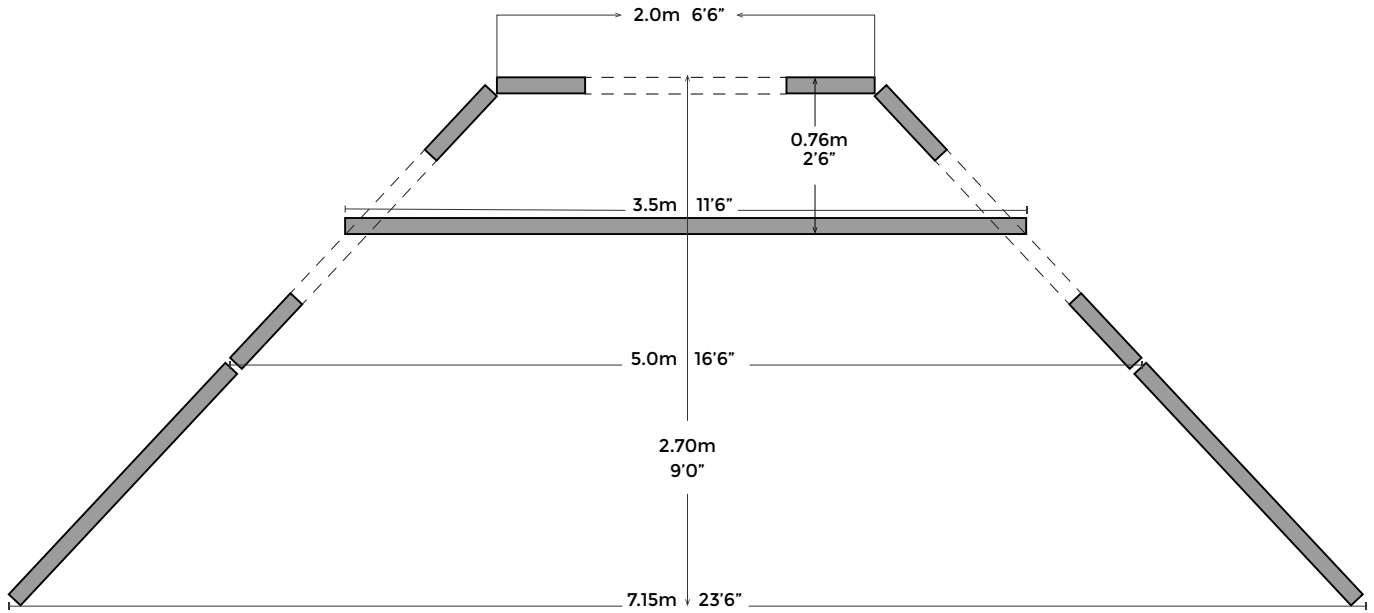


FIXTURE NO	CIRCUIT NO	FIXTURE TYPE	POSITION	FOCUS	COLOUR	NOTES
1		650W ZOOM PROFILE	FOH	WASH SR	152	SOFT FOCUS
2		"	"	" CS	"	"
3		"	"	" SR	"	"
4		"	"	" SL	"	"
5		"	"	" CS	"	"
6		"	"	" SL	"	"
7		PAR 64	"	NIGHT SR	075	CP62
8		"	"	" CS	"	"
9		"	"	" SL	"	"
10		500W/650W FRESNEL	LX3	BACKLIGHT USR	147	DOOR TO SET AND FLOOR
11		"	"	" USL	"	"
12		"	LX2	" DSR	"	"
13		"	"	" DSC	"	"
14		"	"	" DSL	"	"
15		"	BOOM UR	SIDELIGHT	106	NO SPILL ON STAGE FLOOR
16		"	BOOM DR	"	"	"
17		"	BOOM UL	"	"	"
18		"	BOOM DL	"	"	"
19		PAR 64	BOOM UR	FIGHT FLASHBACK	158	CP62
20		"	BOOM DR	BED FLASHBACK	"	"
21		500/650W FRESNEL		TIGHT DSC	O/W	GRAVE SPECIAL
22				TIGHT CS	O/W	NOOSE SPECIAL

# SHELL SHOCK

## SET LAYOUT

PLAN VIEW (NOT TO SCALE)



**SHELL SHOCK**  
**SET LIMB EXTENSION**  
SIDE ELEVATION (NOT TO SCALE)

